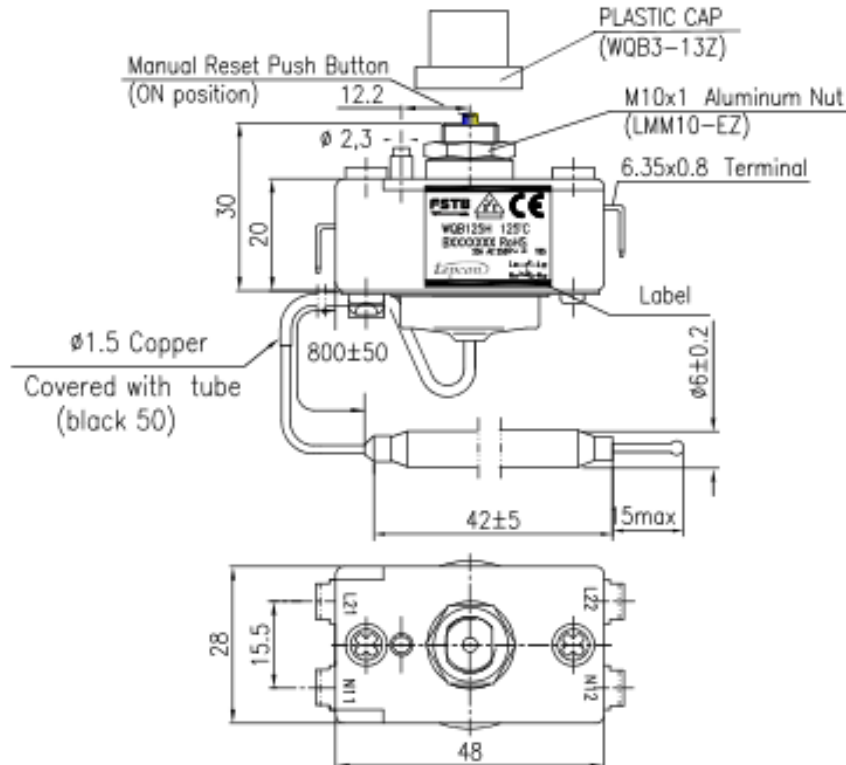


TYPE 13 CUT-OUT



Technical Parameter

1. Cut-off temperature: $125 \pm 6^\circ\text{C}$
2. Reset mode: manual reset $< 40^\circ\text{C}$
3. Rated voltage: AC 250V Rated current: AC 20A

4. Electric diagram:

```

L21 ----- L22
N11 ----- N12
    |
    v
  emp.Rises
    
```

REMARK:

1. The above action temperature is in the standard atmospheric pressure measurement. If atmospheric pressure change, need to modify action temperature, Modified factor: $C=0.37[^\circ\text{C}/\text{Kpa}]$
2. Code of media used to fill VN&V2M
5. Contact resistance: $< 50\text{m}\Omega$ (under normal condition)
6. Insulation resistance: $> 100\text{M}\Omega$ (under normal condition)
7. Dielectric strength: AC 2000V 1min (under normal condition)
8. Temperature change speed: $< 1.0^\circ\text{C}/\text{min}$
9. Life of contact: > 6000 cycles
10. Capillary in bath: $> 150\text{mm}$
12. Maximum temperature around the Switch Head $T85^\circ\text{C}$
13. Temperature around bulb 140°C
14. When there is any leak on capillary or bulb, thermostat will be off